

Product information

Urban takes its inspiration from the street. It has a sharply styled architectural look with clean lines forming a structured geometric grid pattern reminiscent of a downtown urban cityscape. Lightly textured, there's an almost industrial metallic sheen to the freshly themed colourways which work with both Xtreme and Lucia.

Urban is certified to the EU Ecolabel.



Technical information

UK

Composition

100% Recycled Flame Retardant Polyester.
Non metallic dyestuffs

Environmental

Made from 100% recycled polyester.
Certified to the EU Ecolabel.

Width

140cm minimum

Weight

320g/m² ±5% (450g/lin.m ±5%)

Abrasion Resistance

5 year guarantee / 100,000 Martindale cycles
(full details available)

Flammability

BS EN 1021 - 1:2006 (cigarette)
BS EN 1021 - 2:2006 (match)
BS 7176:2007 Low Hazard
BS 5852:2006 Section 4 Ignition Source 5
BS 7176:2007 Medium Hazard
DIN 4102 B1
NF D 60-013 : 2006
NF - P - 92 - 507 M1
UNI 8456 & UNI 9174 Classe 1
Note: Flammability performance is dependent on foam used.

Light Fastness

6 (ISO 105 - B02:2013)

Fastness to Rubbing

Wet: 4, Dry: 4 (ISO 105 - X12:2002)

Cleaning

Washable to 60°C. Wipe clean with a damp cloth or shampoo using proprietary upholstery shampoo.

Please note that seam performance is dependent on seam construction and needle and thread type. We recommend that appropriate sewing advice be taken.

Note: Batch to batch variations in shade may occur within commercial tolerances. We reserve the right to alter technical specifications without notice. The Unregistered Design Rights and the Copyright in all designs are the exclusive property of Camira Fabrics Limited.

D

Zusammensetzung

100% Recyceltes schwerentflammables Polyester.
Nicht schwermetallhaltige Farbstoffe

Umweltfreundlich

Hergestellt aus 100% recycelten Polyester.
Nach Zertifikat EU Ecolabel.

Breite

140cm nutzbare Breite

Gewicht

320g/m² ±5% (450g/lfd.M ±5%)

Scheuerfestigkeit

5 Jahre Garantie / 100,000 Martindale Scheuertouren
(Details auf Anfrage)

Feuersicherung

BS EN 1021 - 1:2006 (Zigarettentest)
BS EN 1021 - 2:2006 (Streichholztest)
BS 7176:2007 Low Hazard
BS 5852:2006 Section 4 Ignition Source 5
BS 7176:2007 Medium Hazard
DIN 4102 B1
NF D 60-013 : 2006
NF - P - 92 - 507 M1
UNI 8456 & UNI 9174 Classe 1
Bemerkung: Schwerentflammbarkeit hängt von verwendetem Schaum ab

Lichtechtheit

6 (ISO 105 - B02:2013)

Reibechtheit

Nass: 4, Trocken: 4 (ISO 105 - X12:2002)

Reinigung

Washbar bis 60°C. Regelmässig staubsaugen. Dazu mit einem feuchten Tuch abwischen, oder mit einem speziellen Polsterschaum behandeln.

Eine optimale Nahtausreissfestigkeit hängt von der Nahtfahne, der verwendeten Nadel und dem Näh-Garn ab. Wir empfehlen daher Nähversuche durchzuführen.

Wichtig: Handelsübliche Farbabweichungen können auftreten und berechtigen nicht zur Reklamation. Wir behalten uns die Änderung technischer Spezifikationen vor. Die registrierten und nicht registrierten Urheberrechte der Dessinierungen sind ausschliessliches Eigentum der Camira Fabrics Limited.

Contact

UK Head Office:	+44 (0)1924 490491
Germany:	+49 7031 60 84 30
Scandinavia:	+45 32 55 20 01
France/Benelux:	+32 56 227 266
USA:	+616 288 0655
China:	+86 (0) 21 6133 1812

www.camirafabrics.com



F

Composition

100% Polyester retardateur de flamme recyclé. Teintures non métalliques

Écologique

Fabriqué d'un polyester 100% recyclé avec le certificat EU Ecolabel.

Largeur

140cm minimum

Poids

320g/m² ±5% (450g/m.l ±5%)

Résistance à l'abrasion

Garantie de 5 ans / 100,000 Martindale tours
(renseignements complémentaires disponibles)

Flammabilité

BS EN 1021 - 1:2006 (cigarette)
BS EN 1021 - 2:2006 (allumette)
BS 7176:2007 Low Hazard
BS 5852:2006 Section 4 Ignition Source 5
BS 7176:2007 Medium Hazard
DIN 4102 B1
NF D 60-013 : 2006
NF - P - 92 - 507 M1
UNI 8456 & UNI 9174 Classe 1
Notez: Réaction au feu dépend de la mousse utilisée.

Solidité à la lumière

6 (ISO 105 - B02:2013)

Solidité au Frottement

Mouillé: 4, Sec: 4 (ISO 105 - X12:2002)

Nettoyage

Lavable jusqu'à 60°C. Aspirer régulièrement. Essuyer avec une étoffe humide ou nettoyer à l'aide d'un produit approprié pour tissus d'ameublement.

Veuillez noter que la performance du joint dépend de sa construction ainsi que de l'aiguille et du type de fil utilisés.

Remarque: une variation de couleurs peut provenir (commerciallement tolérable). Nous réservons le droit de changer les spécifications techniques sans préavis. Les Droits de Conception non-enregistrés et les droits d'auteur de tous les motifs sont la propriété exclusives de Camira Fabrics Limited.

ES

Composición

100% Poliéster resistente al fuego Reciclado. Tintes no metálicos

Ambiental

Hecho de 100% de poliéster reciclado. Certificado con EU Flower.

Ancho

140cm mínimo

Peso

320g/m² ±5% (450g/lin.m ±5%)

Resistencia a la abrasión

Garantía de uso 5 años / 100,000 Martindale ciclos
(más información disponible bajo consulta)

Inflamabilidad

BS EN 1021 - 1:2006 (cigarillo)
BS EN 1021 - 2:2006 (carrilla)
BS 7176:2007 Low Hazard
BS 5852:2006 Section 4 Ignition Source 5
BS 7176:2007 Medium Hazard
DIN 4102 B1
NF D 60-013 : 2006
NF - P - 92 - 507 M1
UNI 8456 & UNI 9174 Classe 1
Condiciones ignífugas dependientes del tipo de foam utilizado.

Solidez a la luz

6 (ISO 105 - B02:2013)

Solidez al rozamiento

Húmedo: 4, Seco: 4 (ISO 105 - X12:2002)

Limpieza

Lavable hasta 60°C. Limpiar con aspiradora frecuentemente. Bien lavar con un paño húmedo o con un champú apropiado para tapicería.

Tenga en cuenta que el rendimiento de la costura depende de la construcción de la costura, además de la aguja y del tipo de rosca. Le recomendamos que se aconsejen para coser la costura.

Nota: las variaciones de lote a lote en la sombra se puede producir dentro de tolerancias comerciales. Nos reservamos el derecho a efectuar modificaciones técnicas sin previo aviso. Los derechos sobre los diseños no registrados y los derechos de autor en todos los diseños son propiedad exclusiva de Camira Fabrics Limited.

camira

www.camirafabrics.com

style with substance

Urban



Task seating



Cigarette & Match



Medium Hazard



Environmental



Year guarantee

Urban

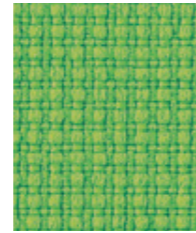
www.camirafabrics.com/samples

Note:

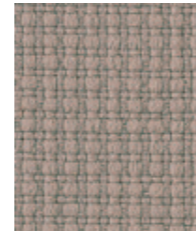
Photographic fabric scans are not colour accurate. Always request actual fabric samples before ordering.



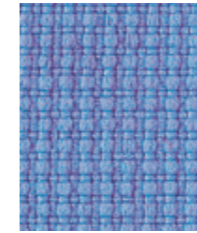
Avenue
YN148



Uptown
YN200



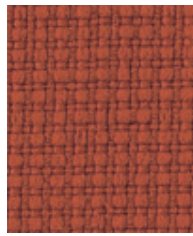
District
YN212



Metropolis
YN097



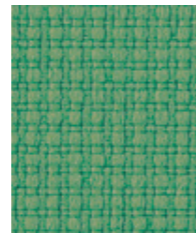
Living
YN108



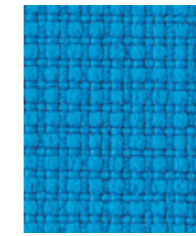
Precinct
YN027



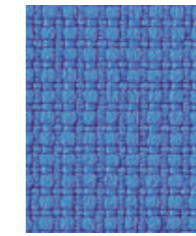
Highrise
YN076



Suburbia
YN159



Penthouse
YN202



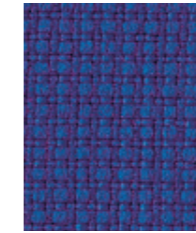
Ringroad
YN208



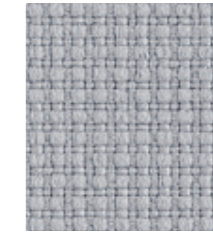
Congestion
YN079



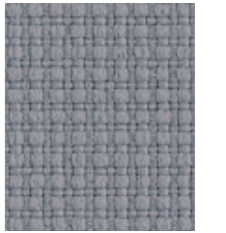
Downtown
YN190



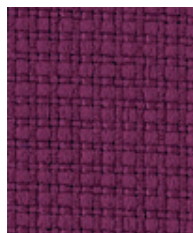
Conurbation
YN082



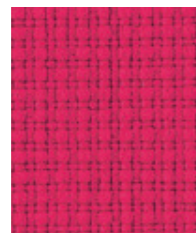
Sidewalk
YN094



Curb
YN206



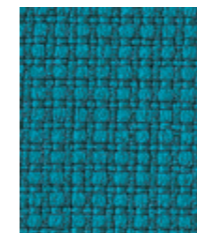
Graffiti
YN204



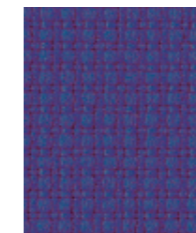
Cosmopolitan
YN203



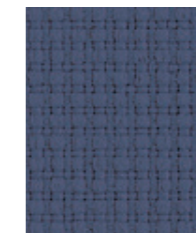
Bench
YN091



Boulevard
YN160



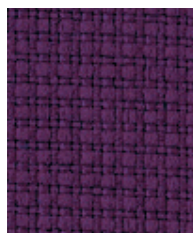
Streetsmart
YN209



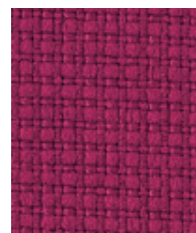
Junction
YN083



Square
YN207



Intersection
YN205



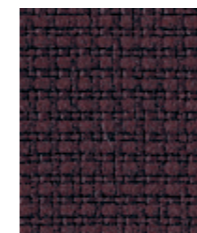
Freeway
YN211



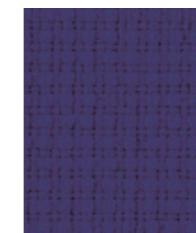
Loft
YN201



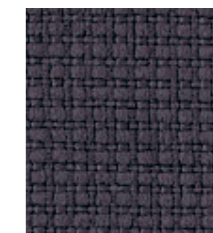
Bedsit
YN158



Inncity
YN086



Nightowl
YN210



Underground
YN145



Subway
YN009